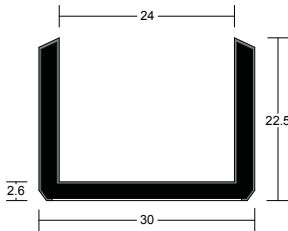


# SYSTEM-36/23 PLUS

## U-SHAPED GASKET

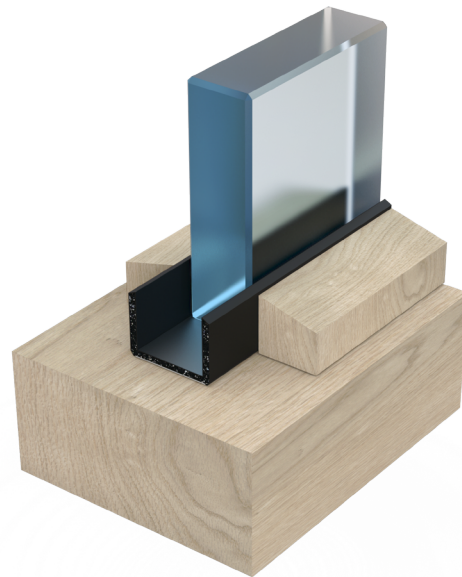
System-36/23 PLUS is a flexible U-shaped glazing gasket designed for 60 minutes fire resistance in screens. Tested with many popular glass types. Supplied coiled in a box so it's easily dispensed and cut to length, reducing wastage.



▲  
**SYSTEM-36/23 PLUS**



▲  
**Glazing bead**  
For unrebated screen frames.



## SYSTEM SPECIFICATIONS

### Test evidence

- ▶ Fire: BS EN 1634-1:2014.
- ▶ Fire: BS 476-22:1987.

### Performance

- ▶ Provides 60 minutes fire resistance.

### Size

- ▶ 30mm x 22.5mm.

### Standard lengths

- ▶ 25m coils.

### Minimum order quantity

- ▶ 25m coil.

### Seal material

- ▶ Intumescent graphite.

### Finish

- ▶ Black with white identification spine.

### Glass thickness

- ▶ Suitable for use with 23mm - 24mm fire rated glass.

### Glass type

- ▶ Please refer to Certifire certificate CF5060 for the full range of glass types.

### Application

- ▶ System for timber framed screens only for periods of 60 minutes integrity and 60 minutes insulation.

### Sodium silicate intumescent liner

- ▶ No liner is required.

### Glazing beads

- ▶ Glazing beads are required on both sides of the glass.
- ▶ Hardwood retaining beads shall be of a min density 550kg/m<sup>3</sup>. Variations in retaining bead profile are allowable using

alternative timber species of min density 550kg/m<sup>3</sup>, including oak, beech, ramin, and utile, but excluding ash (subject to min density). The bead height shall be exactly 20mm, the bead width shall be a min of 21mm.

- ▶ Fixing of beads: Screwed using No.8 x 45mm countersunk screws at 200mm nom. centres.

### Certification

# SYSTEM-36/23 PLUS

CERTIFIRE APPROVED APPLICATIONS: 60 MINUTE TIMBER SCREENS

Certifire CF327 Certificate of Approval relates to the following glasses when used in conjunction with FF1 glazing system at the maximum sizes shown below:

Protection Integrity / Insulation (minutes)	🔥	Glass types	Max. pane height	Max. pane width	Max. pane area	Doors		Screens		
						🖼️	🖼️	🖼️	🖼️	🖼️
60/60	▲	23mm Pyrostop®	2000mm (at 900mm wide)	1342mm (at 1300mm high)	1.80m <sup>2</sup>				✓	✓
60/60	▲	23mm Pyranova® 60 S3.0	2000mm (at 900mm wide)	1342mm (at 1300mm high)	1.80m <sup>2</sup>				✓	✓
60/60	▲	23mm Pyroguard® Rapide Plus	2000mm (at 900mm wide)	1342mm (at 1300mm high)	1.80m <sup>2</sup>				✓	✓

▶ **Note:** For timber framed screens or partitions for periods of 60 minutes integrity and 60 minutes insulation, frame members to be of minimum cross-section 44mm x 94mm in Utile hardwood of nominal density of 550 kg/m<sup>3</sup>. Lower density timber should not be used. Where alternative timbers are required, other timbers of the same density or higher may be used, excluding Ash. Hardwood retaining beads shall be of a minimum density 550 kg/m<sup>3</sup>.

**The maximum glass sizes shown relate to our test evidence. However, the test evidence for the door leaf being used will show the maximum glass size possible, and this may be smaller than the dimensions given in this brochure. The shape and number of apertures will be dependant on the door manufacturers test evidence.**

Please always refer to the test evidence for the door leaf being used, and in case of any query please contact our Technical Services team on 01626 834252.