

LETTERPLATES

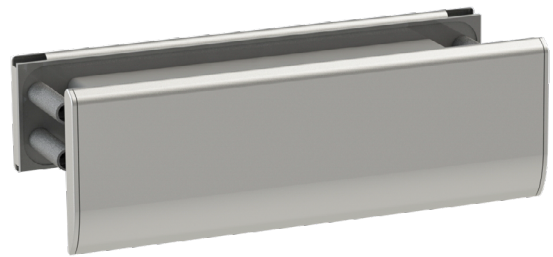
RJ007 SLIMLINE LETTERPLATE

The RJ007 letterplate is stylish, slimline and secure. Designed to meet the exacting security standards of TS008:2015, it is tested to withstand a series of physical tests based on the common methods of burglary. Providing up to 60 minutes fire resistance, this high performance letterplate is available in a range of finishes to complement the aesthetics of your door.



Key benefits

- ▶ Tested to TS008:2015
- ▶ Slimline profile
- ▶ No visible fixings
- ▶ Anti-vandal® feature
- ▶ 37° opening to protect against 'key fishing'
- ▶ Quick and easy to install
- ▶ Can withstand thousands of openings
- ▶ Smooth working mechanism.

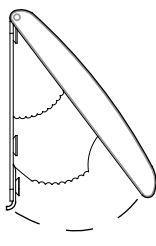


▶ RJ007 Letterplate

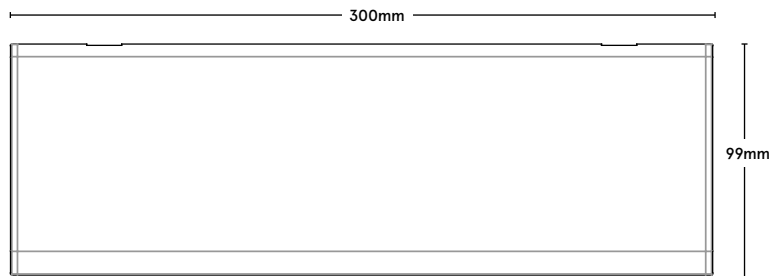
FIRE RESISTANT DOOR HARDWARE



14mm



37°



300mm

99mm

SYSTEM SPECIFICATIONS

Test evidence

- ▶ Fire: BS 476-22:1987 in an FD30.
- ▶ Fire: BS 476-22:1987 in an FD60.
- ▶ Smoke: BS EN 1634-3:2004.
- ▶ Security: PAS 24:2016.
- ▶ Classified to TS008:2015.
- ▶ Durability: 20,000 cycles.

Performance

- ▶ Can provide 30 and 60 minutes fire resistance.

Material

- ▶ Aluminium outer casing with an intumescent lining.

Internal Projection

- ▶ 14mm.

Door thickness

- ▶ 44mm timber doors.
- ▶ 54mm timber doors.

Finishes

- ▶ Internal & external plates available in: silver, gold, black & white.

Certification

- ▶ BSI certified for PAS 24:2016.