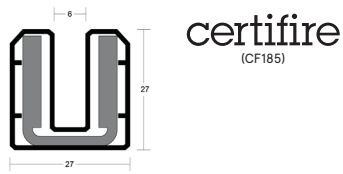
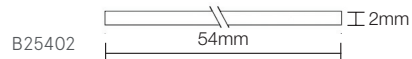
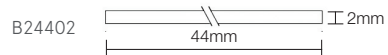


SYSTEM-90 PLUS

FITTING GUIDE



LORIENT SODIUM SILICATE LINERS



CONTENTS

- System 90 plus

TOOLS REQUIRED

- 45mm wood screws
- Mitre saw
- Screwdriver
- Drill & drill bit

DISCLAIMER

Recommendations as to methods, use of materials and construction details are based on the experience and knowledge of Lorient and are given in good faith as a general guide and service to designers, contractors and manufacturers. Lorient reserves the right to make alterations or delete any installation detail without prior notice.

For more information please call:

+44 (0)1626 834252

INSTALLATION DETAIL

FOR TIMBER DOORS

STEP 1

System-90 PLUS can be fitted using standard woodworking tools.

STEP 2

Ensure the aperture is square cornered and true.

STEP 3

Apply the intumescent liner to the aperture, effectively reducing the size by 2mm all round.

STEP 4

Re-measure the aperture and then cut the System-90 PLUS glazing channel to length and mitre corners, using a timber block in the u-shape to keep it square while cutting the channel.

STEP 5

The glazing pane should be cut to the size of the aperture MINUS 16mm on aperture size.

STEP 6

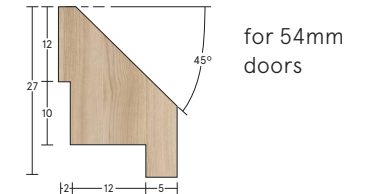
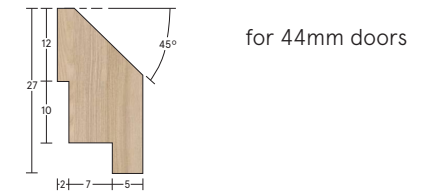
The beading should be measured and cut to size.

STEP 7

Screw the beading in place using no. 8 x 45mm countersunk screws, positioning at 150mm centres nominal.



BEAD DETAIL (not included)



ASSA ABLOY LTD T/A LORIENT
Endeavour House
Fairfax Road
Heathfield Ind Estate
Newton Abbot
Devon TQ12 6UD
United Kingdom

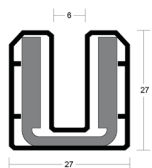
+44 (0)1626 834252
www.lorientgroup.com

All rights reserved. No part of this fitting guide may be reproduced, stored in a retrieval system, or transmitted in any means, electronic, mechanical, photocopying, recording or otherwise without the written permission of Lorient.

© 2024 ASSA ABLOY Ltd T/A Lorient. Lorient is a registered trade mark of ASSA ABLOY LIMITED in England.

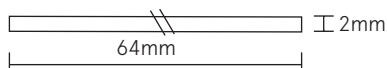
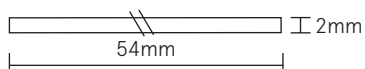
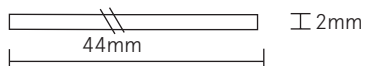
SYSTEM-90 PLUS

FITTING GUIDE



certifire
(CF185)

LORIENT SODIUM SILICATE LINERS



CONTENTS

- System 90 plus

TOOLS REQUIRED

- 45mm wood screws
- Mitre saw
- Screwdriver
- Drill & drill bit

DISCLAIMER

Recommendations as to methods, use of materials and construction details are based on the experience and knowledge of Lorient and are given in good faith as a general guide and service to designers, contractors and manufacturers. Lorient reserves the right to make alterations or delete any installation detail without prior notice.

For more information please call:

+44 (0)1626 834252

INSTALLATION DETAIL

FOR MINERAL COMPOSITE DOORS & 64MM TIMBER DOORS (FD90)

STEP 1

System-90 PLUS can be fitted using standard woodworking tools.

STEP 2

Ensure the aperture is square cornered and true.

STEP 3

Apply the intumescent liner to the aperture, effectively reducing the size by 2mm all round.

STEP 4

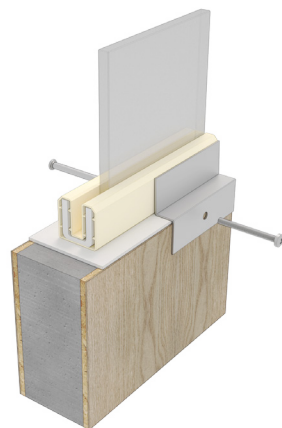
Re-measure the aperture and then cut the System-90 PLUS glazing channel to length and mitre corners, using a timber block in the u-shape to keep it square while cutting the channel.

STEP 5

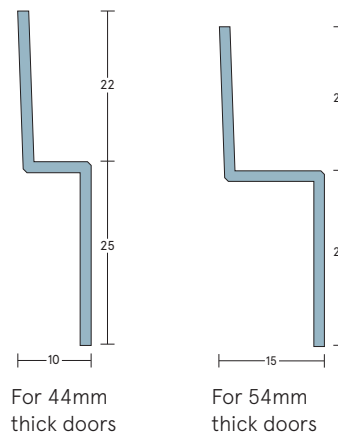
The glazing pane should be cut to the size of the aperture MINUS 16mm on aperture size and MINUS glass type fitting clearance.

STEP 6

The beads should be steel 'Z' sections and fixed with sleeved through bolts, 50mm in from each corner and at no more than 200mm fixing centres (composite) or 150mm centres (timber).

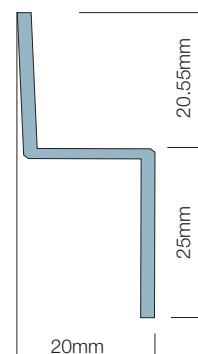


BEAD DETAIL (not included)

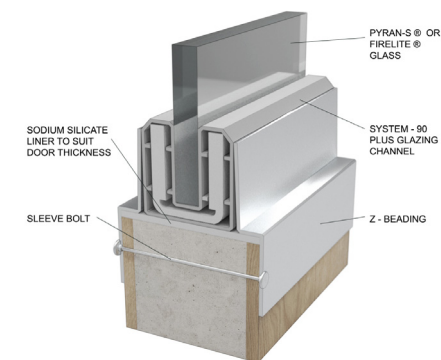


For 44mm thick doors

For 54mm thick doors



For 54mm thick doors



LORIENT
ASSA ABLOY

ASSA ABLOY LTD T/A LORIENT
Endeavour House
Fairfax Road
Heathfield Ind Estate
Newton Abbot
Devon TQ12 6UD
United Kingdom

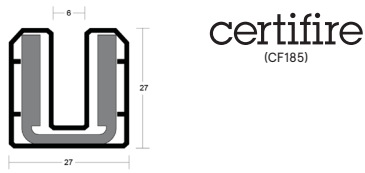
+44 (0)1626 834252
www.lorientgroup.com

All rights reserved. No part of this fitting guide may be reproduced, stored in a retrieval system, or transmitted in any means, electronic, mechanical, photocopying, recording or otherwise without the written permission of Lorient.

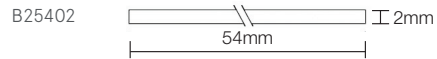
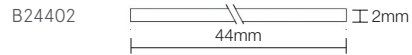
© 2024 ASSA ABLOY Ltd T/A Lorient. Lorient is a registered trade mark of ASSA ABLOY LIMITED in England.

SYSTEM-90 PLUS

FITTING GUIDE



LORIENT SODIUM SILICATE LINERS



CONTENTS

- System 90 plus

TOOLS REQUIRED

- 45mm wood screws
- Mitre saw
- Screwdriver
- Drill & drill bit

DISCLAIMER

Recommendations as to methods, use of materials and construction details are based on the experience and knowledge of Lorient and are given in good faith as a general guide and service to designers, w Lorient reserves the right to make alterations or delete any installation detail without prior notice.

For more information please call:

+44 (0)1626 834252

INSTALLATION DETAIL

FOR TIMBER SCREENS

STEP 1

System-90 PLUS can be fitted using standard woodworking tools.

STEP 2

Ensure the aperture is square cornered and true.

STEP 3

Apply the intumescent liner to the aperture, effectively reducing the size by 2mm all round.

STEP 4

Re-measure the aperture and then cut the System-90 PLUS glazing channel to length and mitre corners, using a timber block in the u-shape to keep it square while cutting the channel.

STEP 5

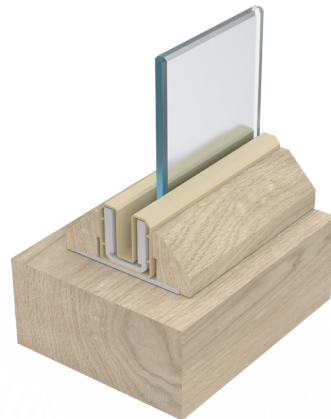
The glazing pane should be cut to the size of the aperture MINUS 16mm on aperture size.

STEP 6

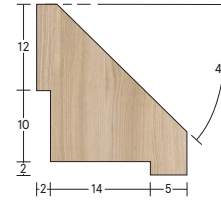
The beading should be measured and cut to size.

STEP 7

Screw the beading in place using no. 8 x 45mm countersunk screws, positioning at 200mm centres nominal.



BEAD DETAIL (not included)



For unrebeated screen frames



ASSA ABLOY LTD T/A LORIENT
Endeavour House
Fairfax Road
Heathfield Ind Estate
Newton Abbot
Devon TQ12 6UD
United Kingdom

+44 (0)1626 834252
www.lorientgroup.com

All rights reserved. No part of this fitting guide may be reproduced, stored in a retrieval system, or transmitted in any means, electronic, mechanical, photocopying, recording or otherwise without the written permission of Lorient.

© 2024 ASSA ABLOY Ltd T/A Lorient. Lorient is a registered trade mark of ASSA ABLOY LIMITED in England.