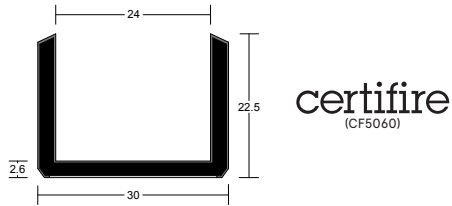


SYSTEM-36/23 PLUS

FITTING GUIDE



CONTENTS

- System-36/23 PLUS

TOOLS REQUIRED FOR GLAZING SYSTEM

- Adhesive (optional)
- Knife or snips

TOOLS REQUIRED FOR BEADING SYSTEM

- 45mm woodscrews
- Mitre saw
- Screw driver
- Drill and drill bit
- Hammer

BEAD DETAIL (not included)



For unrebated timber screen frames.

For more information please call:

+44 (0)1626 834252

INSTALLATION DETAIL

FOR TIMBER SCREENS

Ensure that any aperture has been properly formed, either by the original door manufacturer, or by one of their approved "aperture cutters or Licenced Processors".

The bead dimension must be appropriate for the glass type and screen or partition being used, and must relate to test evidence.

STEP 1

Ensure the surface is free from dust and grease. Fit glazing system over pane edge.

STEP 2

Pull the glazing system along one side of the panel, until taut.

STEP 3

Notch the corner at 90°, without cutting the coloured channel base, and fold around the corner to form a 45° mitre.

STEP 4

Continue for the remaining sides and fully mitre the meeting corner. Alternatively, cut the channel to side lengths and mitre the corners to 45°.

STEP 5

Join the sections of glazing system at pane corner intersections - **ensuring there are no gaps at the corners.**

STEP 6

If mitres pull apart, a small amount of adhesive could be used to ease fitting at meeting points.

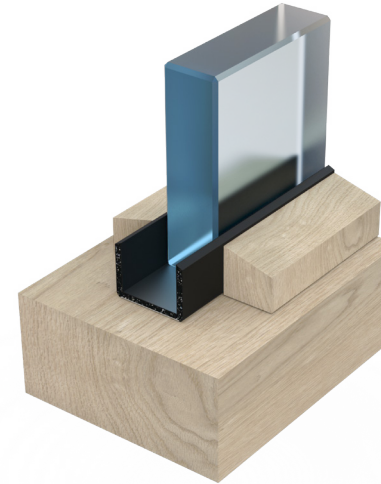
STEP 7

With the glazing system in place, all other fitting follows standard practice.

STEP 8

Beads are screw-fixed using 45mm woodscrews, No. 8's at maximum of 200mm fixing centres.

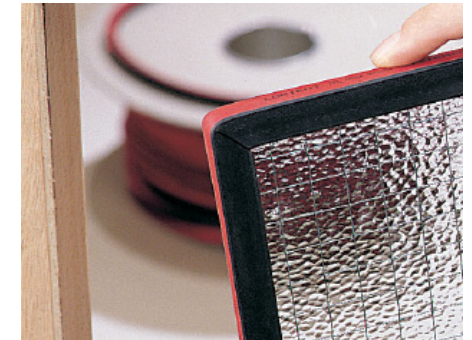
Please note that butt jointing of the gasket will invalidate the test evidence.



DISCLAIMER

Recommendations as to methods, use of materials and construction details are based on the experience and knowledge of Lorient and are given in good faith as a general guide and service to designers, contractors and manufacturers.

Lorient reserves the right to make alterations or delete any installation detail without prior notice.



V2

 **LORIENT**
ASSA ABLOY

ASSA ABLOY LTD T/A LORIENT
Endeavour House
Fairfax Road
Heathfield Ind Estate
Newton Abbot
Devon TQ12 6UD
United Kingdom

+44 (0)1626 834252
www.lorientgroup.com

All rights reserved. No part of this fitting guide may be reproduced, stored in a retrieval system, or transmitted in any means, electronic, mechanical, photocopying, recording or otherwise without the written permission of Lorient.

© 2024 ASSA ABLOY Ltd T/A Lorient. Lorient is a registered trade mark of ASSA ABLOY LIMITED in England.