

LVV40

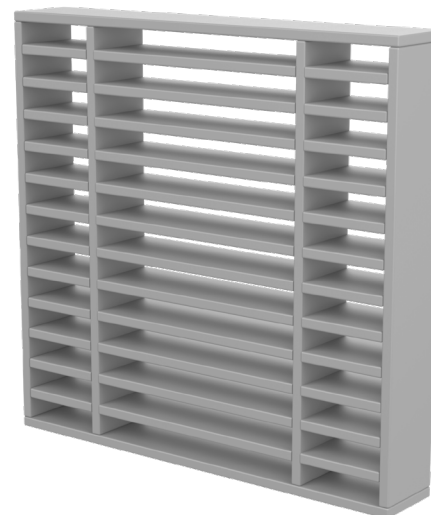
HIGH PERFORMANCE VISION STYLE INTUMESCENT AIR TRANSFER GRILLE

A high performance, standard vision intumescent air transfer grille for doors, walls and ducts. To be used where air movement/flow via fan is stopped in the event of a fire. Provides excellent airflow characteristics, which result in low sound power level and efficient operation in normal use.



Key benefits

- ▶ Fits directly into ducts, doors or wall apertures
- ▶ No moving parts
- ▶ Excellent fire integrity + insulation performance
- ▶ EI rating in conjunction with cover grilles
- ▶ Not prone to clogging
- ▶ No access panels required
- ▶ Robust construction
- ▶ No maintenance.



↑
LVV40

STANDARD SIZES AVAILABLE (MM)

WIDTH	98	148	198	248	298	348	398	448	498	598
HEIGHT	98	148	198	248	298	348	398	448	498	598

Other non-standard sizes may be available - please ask for details.
Square and rectangle options available.

SYSTEM SPECIFICATIONS

Test evidence

- ▶ Fire: BS 476-20 & 22:1987.
- ▶ Fire: BS EN 1634-1:2014.
- ▶ Fire: BS EN 1364-5:2017.
- ▶ Fire: NEN 6069:2005+A1:2016.

Performance

- ▶ Can be used to provide up to 60 minutes resistance to fire.
- ▶ EI rating of 120 minutes when used in conjunction with a cover grille. Please speak to our Technical Department for details.

Size

- ▶ Width: 100mm - 600mm (in 25mm increments).
- ▶ Height: 100mm - 600mm (in 25mm increments).
- ▶ Square and rectangle options available.

Thickness

- ▶ 40mm.

Finish

- ▶ Silver as standard.

Free area

- ▶ Approx 60% free area.
- ▶ Low sound power level +.

Application

- ▶ Suitable for doors, walls and ducts.
- ▶ Note: in applications where high levels of humidity or wetness are anticipated, it is recommended that an LVH44 product should be employed.

Orientation

- ▶ Suitable for use in vertical applications.

Positional requirements (Certifire)

- ▶ The upper edge of the grille shall be no higher than 3000mm from floor level.
- ▶ The lower edge of the grille shall be no closer than 400mm to floor level.
- ▶ Other positional requirements available, please speak to our Technical Department for further information.

Material

- ▶ PVC slats with an intumescent core.

Fixing

- ▶ Each air transfer grille is manufactured 2mm less than a nominal aperture size to provide clearance when installed in a duct or other aperture of the same nominal dimensions. E.g. a 198mm x 198mm nominal size air transfer grille will suit a 200mm x 200mm aperture.
- ▶ Screwed and bedded in Loriant intumescent sealant.
- ▶ Note: fitting is determined by application. Please refer to separate fitting instructions.

Use with

- ▶ Metal cover grille (optional).

Certification

(CF564)