

# WALL 16

## LVV40S FIRE + SMOKE AIR TRANSFER GRILLE FITTED INTO RIGID WALLS

**DESCRIPTION**

1	Rigid wall
2	Air transfer grille casing fixing screw
3	Mortar facing over irregular surface
4	Mineral board casing
5	Pressed steel cover grille
6	LVV40S fire + smoke air transfer grill
7	Actuator cable
8	Servo driven actuator
9	Intumescent sealant to bed casing into wall
10	Cover grille fixing screws into wall plugs

**Note:** In order to comply with CF564, the upper edge of the grille shall be no higher than 3000mm from floor level. The lower edge of the grille shall be no closer than 400mm to floor level.

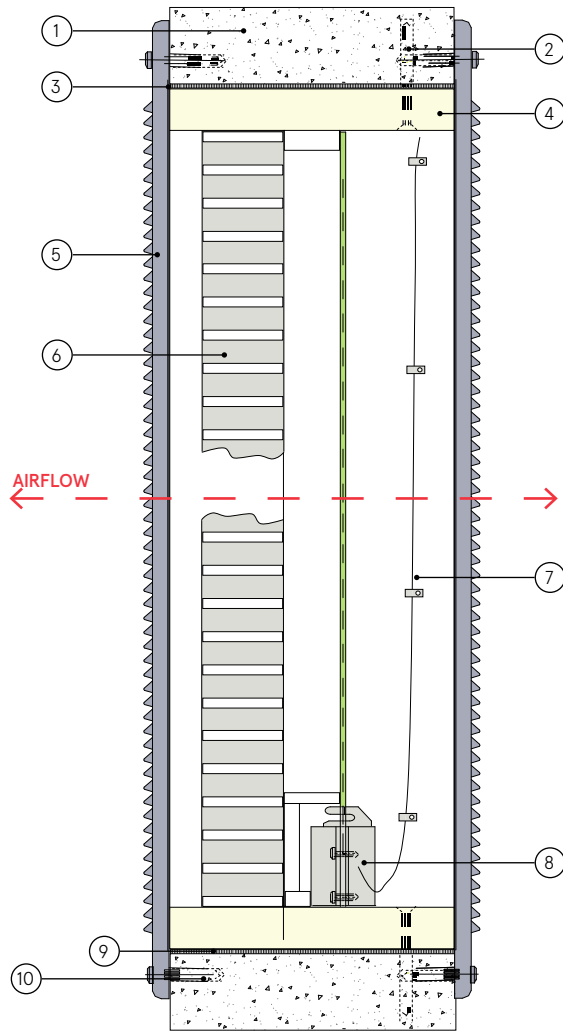
**CONTENTS**

- LVV40S fire + smoke resistant air transfer grille
- Cover grille (optional)
- Wiring instructions

**TOOLS REQUIRED**

- 50mm screws
- Wall plugs for 50mm screws
- Cable clips
- Lorient intumescent sealant

**Note:** To achieve insulating rating, a cover grille must be fitted.



### LVV40S fitted into rigid walls

### EI60S/FR90S\*

**Fire Resistance in accordance with**

BS 476-22:1987  
BS EN 1364-5:2017

**Approval Ref**

\*Certifire CF564  
18/17274-1071

**Max single cell size**

600mm (w) x 400mm (h)  
(640mm x 440mm overall)  
or 0.2025m<sup>2</sup> - Certifire

LVV40S comes in a non-combustible housing which means the actual size of the product is approx. 40mm larger. E.g. a 300mm x 300mm damper is actually 340mm x 340mm due to the housing.

**INSTALLATION INSTRUCTIONS**

- ▶ LVV40S dampers are supplied ready assembled in a mineral board casing. Care must be taken not to damage the casing during installation.
- ▶ Cut the aperture to the required size with a maximum gap all around of 5mm. If the resulting aperture is out of square, irregular or oversized, make good with mortar.
- ▶ If the LVV40S is already fitted with cover grilles these must be removed.
- ▶ Drill the casing for fixing screws to the wall, minimum of 4 number will be needed.
- ▶ Trial fit the LVV40S assembly into the aperture and ensure that it can be positioned within the section of the wall, without jamming or twisting.
- ▶ Position the LVV40S assembly so that one face is flush with one face of the wall. Mark around the air transfer grille (ATG) casing at the opposite face to determine the amount needed to be removed to give a flush fit on both faces. Also mark the positions of the wall fixing screws through the holes drilled.
- ▶ Establish the actuator cable run and make the necessary cut outs to suit.
- ▶ Remove the ATG assembly from the wall aperture. Trim the ATG casing to the marked length.
- ▶ Drill the wall for screw plugs and fit plugs.
- ▶ Apply Lorient intumescent sealant to aperture faces. Position ATG assembly square and flush to both faces of the wall while feeding the actuator cable into the selected position.
- ▶ Bed in sealant around LVV40S casing. Clean off surplus sealant and ensure outer edge of LVV40S casing is fully sealed.
- ▶ Fix actuator cable to casing with small cable clips to prevent it fouling the shutter plates.
- ▶ See wiring instructions.
- ▶ Carry out function check of the ATG by activation from the control unit.
- ▶ After satisfactorily completing the function test, position a pressed steel cover grille concentrically over one face of the LVV40S and fix using screws into wall plugs.
- ▶ Repeat to other face if two cover grilles are to be fitted.