

WALL 14

LVV40 FITTED INTO RIGID WALL CONSTRUCTION

DESCRIPTION

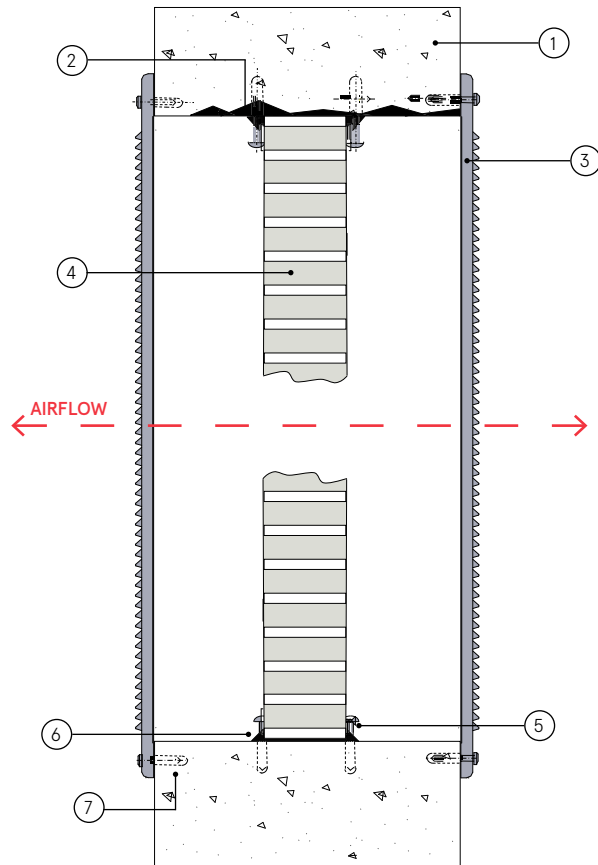
- 1 Rigid wall construction
- 2 Mortar facing over irregular surface
- 3 Pressed steel cover grille
- 4 LVV40 air transfer grille
- 5 Air transfer grille fixing screws into wall plugs
- 6 Use Lorient intumescent sealant to bed air transfer grille into the wall
- 7 Cover grille fixing screws into wall plugs.

CONTENTS

- LVV40 air transfer grille
- Pressed steel cover grille

TOOLS REQUIRED

- 50mm screws
- Wall plugs for 50mm screws
- Lorient intumescent sealant



Note: To achieve insulating rating, a cover grille must be fitted.

LVV40 fitted into rigid wall construction

E1120

Fire Resistance in accordance with
BS EN 1364-5:2017

Approval Ref
19/19894-253

Max single cell size
600mm x 600mm

LVV40 air transfer grilles are supplied 2mm less than the nominal size e.g. a 300mm x 300mm is actually 298mm x 298mm.

INSTALLATION INSTRUCTIONS

- ▶ Cut the aperture to the required size with a maximum gap all around of 5mm. If resulting aperture is out of square, irregular or oversized, make good with mortar.
- ▶ Trial fit the LVV40 into the aperture and ensure that it can be positioned within the section of the wall, but not necessarily in the mid position, without jamming or twisting.
- ▶ Mark the position of drill points into wall either side of the LVV40.
- ▶ Remove the LVV40 from the wall aperture.
- ▶ Fix screws into wall with a minimum of 4 screws along the perimeter. For larger units use a maximum of 200mm between centres to provide up to 8 screws per side.
- ▶ Position LVV40 and repeat installation of screws on closest side of the LVV40.
- ▶ Bed in sealant around LVV40. Clean off surplus and ensure outer edge of the air transfer grille is fully sealed.
- ▶ Position pressed steel cover grille centrally over one face of the LVV40 and fix using wall plugs supplied.
- ▶ Repeat to other face if two cover grilles are to be fitted.
- ▶ **Note: Fixings supplied by others.**