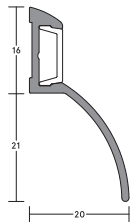


LAS9005 DRIP GUARD FITTING GUIDE



LENGTH _____

CONTENTS

- LAS9005 drip guard
- Steel fixing screws

TOOLS REQUIRED

- Tape measure
- Pencil or marker
- Saw, power or hand
- Power drill
- 4mm drill bit
- 6mm masonry drill

For more information please call:

+9714 883 7206

INSTALLATION DETAIL

NOTE

It is not necessary to remove the door from its hinges - however ensure the proposed position of the guard does not interfere with the operating arc of the door.

STEP 1

Remove the drip guard from the packaging and measure the door width.

STEP 2

For a door opening outwards, the LAS9005 would have to be cut short on the hinge side - this will be dependent on the overall angle to which the door opens.

For a door opening inwards, the LAS9005 would have to fit between the stops, but cut short on the leading edge side, to allow clearance past the stop as the door is opened.

STEP 3

Remove flexible cover strip. Mark the guard with a pencil to the desired length and cut through using a saw.

STEP 4

Using a power drill with a 4mm drill bit, create fixing holes in the guard at the required positions.

STEP 5

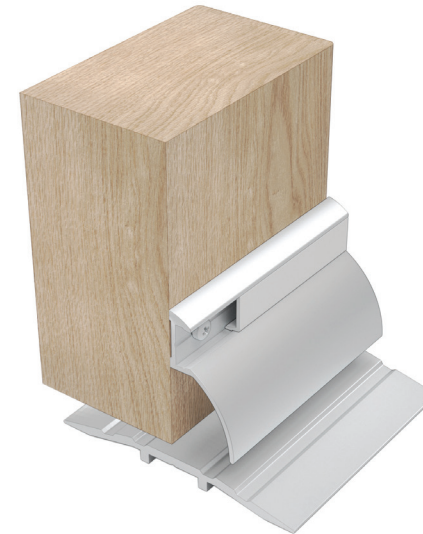
Apply a bead of water resistant sealant along the back face and fix the guard in position using supplied stainless steel screws.

STEP 6

Refit the flexible cover strip to hide screw heads and trim to length.

NOTE

Ensure that the installation of this product does not impede the opening or closing of the door. It is recommended to check the adjustment of the door seal periodically to ensure the door assembly to which it is fitted, closes and latches properly.



NOTE

Recommendations as to methods, use of materials and construction details are based on the experience and knowledge of Lorient and are given in good faith as a general guide and service to designers, contractors and manufacturers.

Lorient reserves the right to make alterations or delete installation detail without prior notice.

V1