

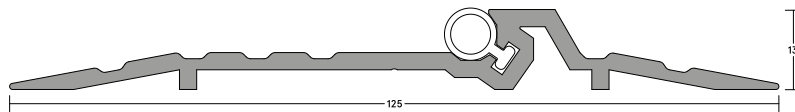
# LAS4014 si

HEAVY DUTY **42dB**

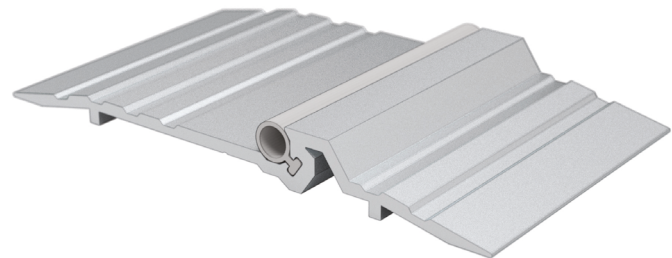
Heavy duty, aluminium, stepped threshold plate featuring high performance silicone compression seal, which helps to prevent rain, draught, light and noise penetration. Can increase the effectiveness of threshold seals by creating a firmer gasket contact. Durable anodised aesthetic finish.



THRESHOLD PLATES + RAMPS



LAS4014 si



## SYSTEM SPECIFICATIONS

### Test evidence

- ▶ Smoke: BS 476-31.1: 1983 at ambient temperature.
- ▶ Acoustic: BS EN ISO 10140-2: 2010 (up to Rw 42dB).
- ▶ Durability: 100,000 cycles.

### Performance

- ▶ Meets smoke requirement: BS 9999: 2017.
- ▶ Protects against sound, smoke, weather, draught, light and insects.
- ▶ Suitable for use of fire rated steel doorsets.
- ▶ Provides an even surface underneath the door; suitable for wheeled traffic.

### Location

- ▶ Single and double leaf outward opening doors.

### Use with

- ▶ Practically any drop or door bottom seal.

### Material

- ▶ Aluminium and silicone gasket.

### Standard lengths

- ▶ 1m and 2.1m. Other lengths to special order.

### Fixing

- ▶ Fixing screws are supplied.

### Finishes

- ▶ Silver anodised aluminium with grey silicone rubber gasket as standard.
- ▶ Bronze anodised aluminium with black silicone rubber gasket are subject to non-standard charges and additional lead times.

- ▶ Other powder-coated colour finishes (non-standard - charges and lead times apply).

### Certification