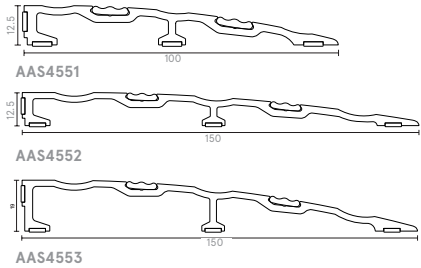


AAS4551, ASS4552, AAS4553 THRESHOLD RAMP FITTING GUIDE

AAS4551 ■ AAS4552 ■
AAS4553 ■



LENGTH _____

CONTENTS

- Aluminium threshold ramp with reversible tread strips
- Acoustic bedding pads affixed
- Bag of screws & plugs

TOOLS REQUIRED

- Tape measure
- Pencil or marker
- Saw, hand or power
- Power drill
- 6mm masonry drill

INSTALLATION DETAIL

It is not necessary to remove the door from its hinges.

STEP 1

Remove the plate from the packaging and measure the door width, between jambs or door stops to determine plate length required.

STEP 2

Measure the threshold plate and mark the desired length (and profile if cutting around the door stop) with a pencil.

STEP 3

Remove tread strips and cut the threshold ramp to length using a saw.

STEP 4

Position the ramp on the door sill in required location (ensuring edge of carpet is butted up against back wall of ramp).

STEP 5

Using the pre-drilled and countersunk holes and with the plate in position, mark hole centres on the floor.

Set plate to one side and using a masonry drill, create fixing holes and insert plugs. Clean away dust.

Screw fix the threshold ramp in place using screws supplied. Replace reversible tread strips to conceal fixings.

STEP 6

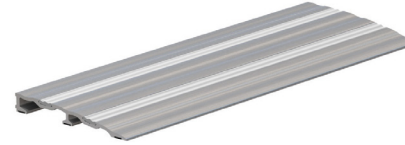
Where the threshold ramp meets the door stop, sealant may be applied to prevent ingress of moisture.

STEP 7

Check to ensure the door can open and close without the need for excessive force.

NOTE

For effective operation, the AAS4551 and AAS4552 threshold ramps require a minimum of 15mm clearance between the door and the floor. The AAS4553 threshold ramp requires a minimum of 21mm.



IMPORTANT

Ensure that the installation of this product does not impede the opening or closing of the door. It is recommended to check the adjustment of the door seal periodically to ensure the door assembly to which it is fitted, closes & latches properly.

DISCLAIMER

Recommendations as to methods, use of materials and construction details are based on the experience and knowledge of Lorient and are given in good faith as a general guide and service to designers, contractors and manufacturers. Lorient reserves the right to make alterations or delete installation detail without prior notice.



Positive pressure-tested. Gasketing materials for fire doors intended for application to wood and plastic covered composite and wood core doors rated up to 1.5 hours and listed steel frames and/or classified steel covered composite, hollow metal doors rated up to 3 hours.

LORIENT
ASSA ABLOY

ASSA ABLOY LTD T/A LORIENT
Endeavour House
Fairfax Road
Heathfield Ind Estate
Newton Abbot
Devon TQ12 6UD
United Kingdom

+44 (0)1626 834252
www.lorientgroup.com

All rights reserved. No part of this fitting guide may be reproduced, stored in a retrieval system, or transmitted in any means, electronic, mechanical, photocopying, recording or otherwise without the written permission of Lorient.

© 2024 ASSA ABLOY Ltd T/A Lorient. Lorient is a registered trade mark of ASSA ABLOY LIMITED in England.

For more information please call:

+44 (0)1626 834252