

# DUCT 7

## FIRE RATED FLEXIBLE WALL WITH ANGLE FIXINGS TO WALL

### DESCRIPTION

- 1 Fire rated flexible wall
- 2 Straight through duct with breakaway connections
- 3 LVHC44 intumescent air transfer grille assembly
- 4 Lorient intumescent sealant around spiral casing to a maximum clearance of 25mm
- 5 **Fixing angle:** 40 x 40 x 1mm thick minimum galvanised steel angles fixed to LVHC44 unit with TEK screw and to wall with drywall screws

**Fixing option 1:** For 200mm diameter and less - 40mm wide angles, at three points on the edge of the LVHC44 air transfer grille

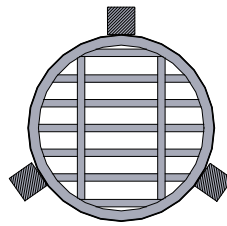
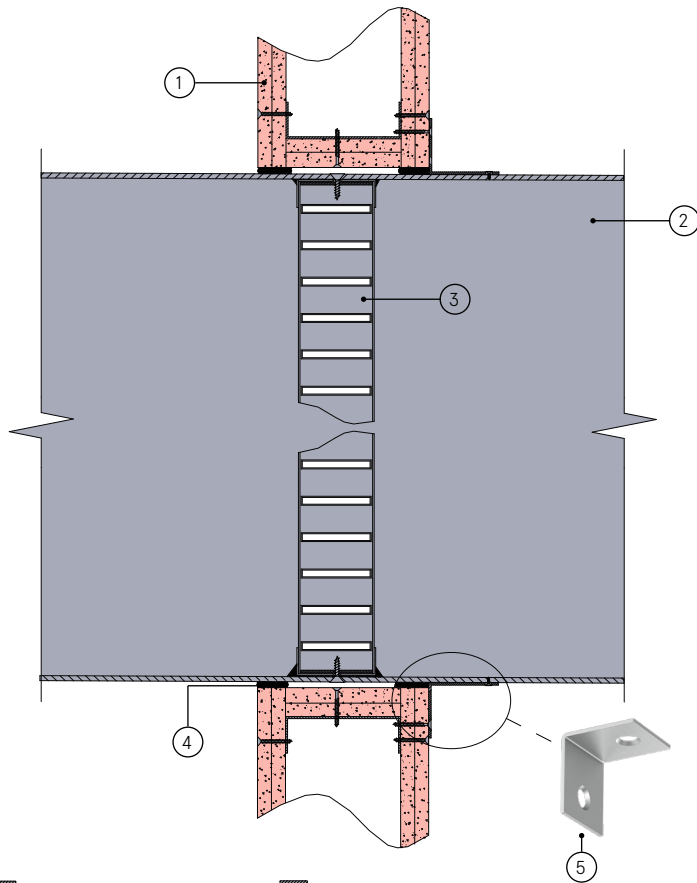
**Fixing option 2:** For greater than 200mm diameter 40mm wide angles, at four points on the edge of the LVHC44 air transfer grilles

### CONTENTS

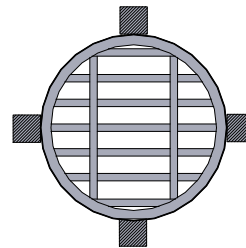
- LVHC44 air transfer grille

### TOOLS REQUIRED

- Fixing angle (40 x 40 x 1mm)
- Self tapping screws (3.2mm x 16mm)
- Drywall screws
- Lorient intumescent sealant



FIXING OPTION 1



FIXING OPTION 2

### Fire rated flexible wall with angle fixings to wall

FR120

### Fire Resistance in accordance with

BS 476-22:1987

### Approval Ref

WFRC C121316 (OW3)  
WFRC 397901

### Max single cell size

600mm diameter

LVHC44 air transfer grilles are supplied 2mm less than the nominal size e.g. a 150mm is actually 148mm.

### INSTALLATION INSTRUCTIONS

- ▶ Cut aperture in wall a least 30mm larger than the outside diameter of the duct.
- ▶ Pass duct through aperture into correct linear location and mark positions of both wall faces on duct.
- ▶ Remove duct from aperture and position LVHC44 in duct midway between the two wall marks.
- ▶ Drill through duct wall into LVHC44 outer frame and fit at least 3 number self tapping screws to retain air transfer grille.
- ▶ Seal joints between edges of LVHC44 and duct wall with intumescent sealant.
- ▶ Fix three or four mounting angles onto the LVHC44 unit using self tapping screws **to one side only**.
- ▶ Insert LVHC44 into fire rated flexible wall opening (note: air transfer grille does not have to be centrally positioned in the opening).
- ▶ Fix the three or four mounting angles depending on the diameter, to the fire rated plasterboard wall with drywall screws.
- ▶ Apply a bead of Lorient intumescent sealant around the perimeter of metal sleeve as shown (note: maximum annular clearance of 25mm applies).
- ▶ Connect ductwork directly to metal sleeve using approved breakaway connections to ensure compliance.