

DUCT 8

FIRE RATED FLEXIBLE WALL WITH ANGLE CLAMPS

DESCRIPTION

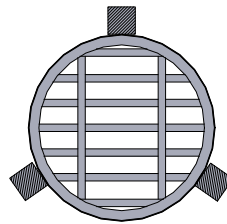
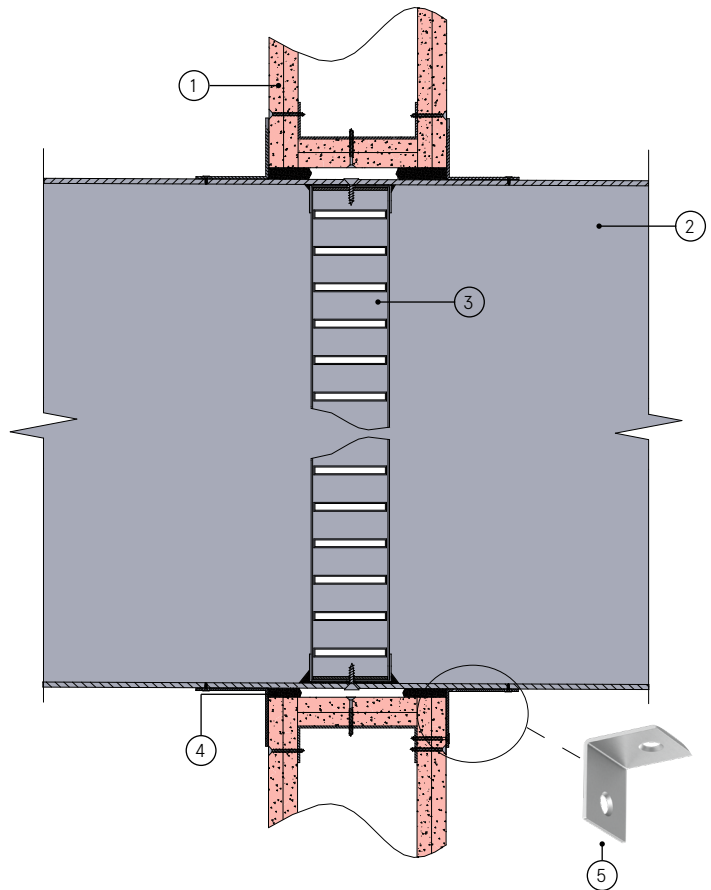
- 1 Fire rated flexible wall
 - 2 Straight through duct with breakaway connections
 - 3 LVHC44 intumescent air transfer grille assembly
 - 4 Lorient intumescent sealant around spiral casing to a maximum clearance of 25mm
 - 5 **Fixing angle:** 40 x 40 x 1mm thick minimum galvanised steel angles fixed to air transfer grille unit with self tapping screws
- Fixing option 1:** For 200mm diameter and less - 40mm wide angles, at three points on the edge of the LVHC44 air transfer grille
- Fixing option 2:** For greater than 200mm diameter 40mm wide angles, at four points on the edge of the LVHC44 air transfer grille

CONTENTS

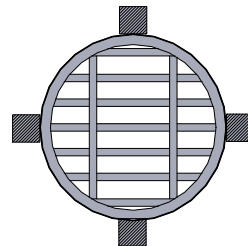
- LVHC44 air transfer grille

TOOLS REQUIRED

- Fixing angle (40 x 40 x 1mm)
- Self tapping screws (3.2mm x 16mm)
- Drywall screws
- Lorient intumescent sealant



FIXING OPTION 1



FIXING OPTION 2

Fire rated flexible wall with angle clamps

FR120

Fire Resistance in accordance with

BS 476-22:1987

Approval Ref

WFRC C121316 (OW4)
WFRC 397901

Max single cell size

600mm diameter

LVHC44 air transfer grilles are supplied 2mm less than the nominal size e.g. a 150mm is actually 148mm.

INSTALLATION INSTRUCTIONS

- ▶ Cut aperture in wall a least 30mm larger than the outside diameter of the duct.
- ▶ Pass duct through aperture into correct linear location and mark positions of both wall faces on duct.
- ▶ Remove duct from aperture and position LVHC44 in duct midway between the two wall marks.
- ▶ Drill through duct wall into LVHC44 outer frame and fit at least 3 number self tapping screws to retain air transfer grille.
- ▶ Seal joints between edges of LVHC44 and duct wall with intumescent sealant.
- ▶ Fix the three or four mounting angles onto one side of the LVHC44 air transfer grille unit using self tapping screws.
- ▶ Insert LVHC44 into fire rated flexible wall opening (note: air transfer grille does not have to be centrally positioned in the opening).
- ▶ Apply a bead of Lorient intumescent sealant around the perimeter of metal sleeve as shown (note: maximum annular clearance of 25mm applies).
- ▶ Clamp the LVHC44 into the wall by fixing mounting angles to LVHC44 casing using self tapping screws.
- ▶ Connect ductwork directly to metal sleeve using approved breakaway connections to ensure compliance.