

DUCT 3

LVH44 INSTALLATION FOR RECTANGULAR STEEL DUCTS

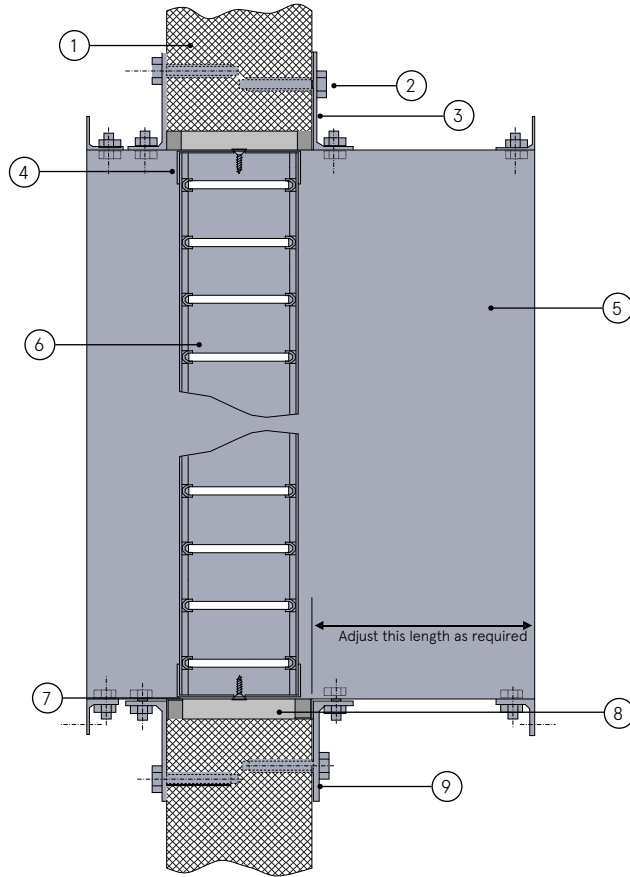
DESCRIPTION	
1	Wall
2	50mm wall anchors
3	Mouting angle 75 x 25 x 1.2mm galvanised steel
4	Damper retaining bracket 20 x 20 x 1mm galvanised steel fixed with short self tapping screws
5	Galvanised steel duct
6	LVH44 intumescent air transfer grille
7	Peripheral intumescent sealant bead
8	Minimum of 15mm wool
9	Joining angle 25 x 25 x 1.2mm galvanised steel.

CONTENTS

- LVH44 air transfer grille

TOOLS REQUIRED

- 50mm wall anchors
- Mouting angle (75 x 25 x 1.2mm galvanised steel)
- Retaining bracket 1mm (25mm x 25mm)
- Short self tapping screws (3.2mm x 16mm)
- Mineral wool
- Lorient intumescent sealant



LVH44 installation for rectangular steel duct.

FR120

Fire Resistance in accordance with

BS 476-22:1987

Approval Ref

WFRC C121316

Max single cell size

600mm x 600mm

LVH44 air transfer grilles are supplied 2mm less than the nominal size e.g. a 300mm x 300mm is actually 298mm x 298mm.

INSTALLATION INSTRUCTIONS

- ▶ Prepare a short piece of duct at least 200mm longer than the thickness of the wall to be penetrated. (100mm wall thickness will require a minimum stub duct length of 300mm).
- ▶ To one end of the stub duct fit a wall mounting angle and a joining angle, these may be welded to the ducts or screw fixed. Ensure that all mountings are correctly aligned and square with the duct stub.
- ▶ Fit the air transfer grille retaining brackets to the LVH44. Position the LVH44 into the stub duct where it will be at the centre of the section of the wall when installed e.g. 50 mm from inner flange of mounting bracket for a 100 mm thick wall.
- ▶ Fix the LVH44 using short self tapping screws through retaining brackets into duct wall.
- ▶ Seal around edge of air transfer grille with intumescent sealant.
- ▶ Cut aperture in wall at least 30 mm bigger than the outside duct dimensions.
- ▶ Place stub duct assembly into wall aperture and pack around with mineral wool ensuring that stub duct is level and correctly aligned.
- ▶ Seal over exposed wool with intumescent sealant.
- ▶ Fix mounting bracket to wall using appropriate wall fasteners.
- ▶ Slide second wall mounting bracket over duct, clamp to wall and fix using appropriate anchors.
- ▶ Fit second joining angle to end of stub duct assembly.
- ▶ Complete installation by connecting stub duct to main ducts, sealing joints with appropriate gasket material.